



Driving Health Equity

Merck's initiative to embed health equity into the company DNA

Chrysanthus Herrera
Head of Health Equity and Access Realization

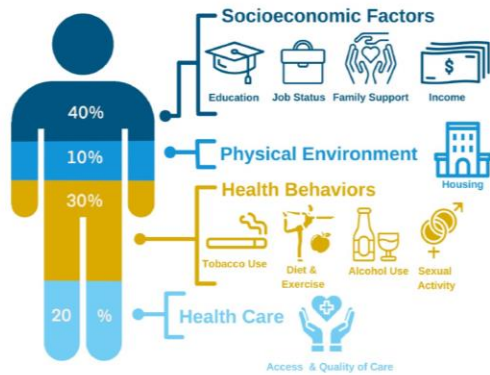


What is Health Equity?

Our definition of health equity recognizes Merck's ability to do good for society beyond access to medicines

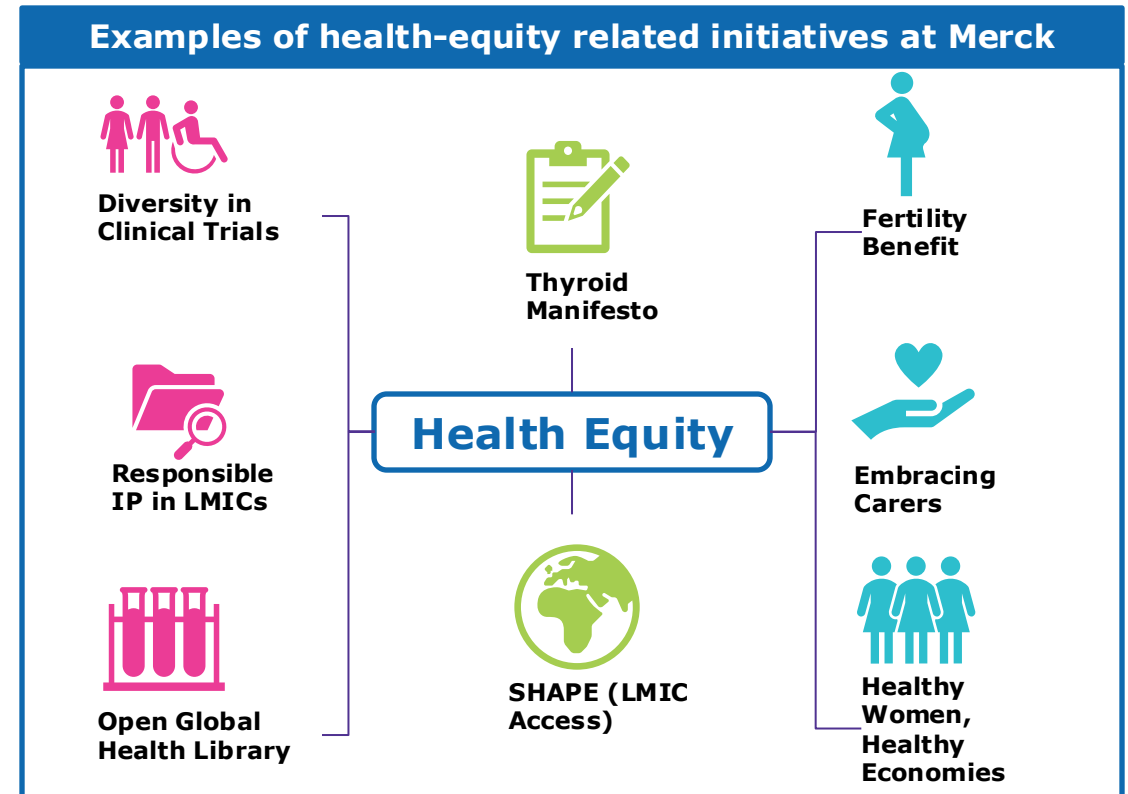
Health Equity starts with ensuring **communities** have access to quality care and are provided the conditions they need **to achieve their best possible health outcomes**

This requires **addressing both the conditions in which people live and the broader structural factors** that shape access to health and well-being.



Only 20% of the variation in health outcomes is determined by **clinical care**, **50% is determined by socioeconomic factors***

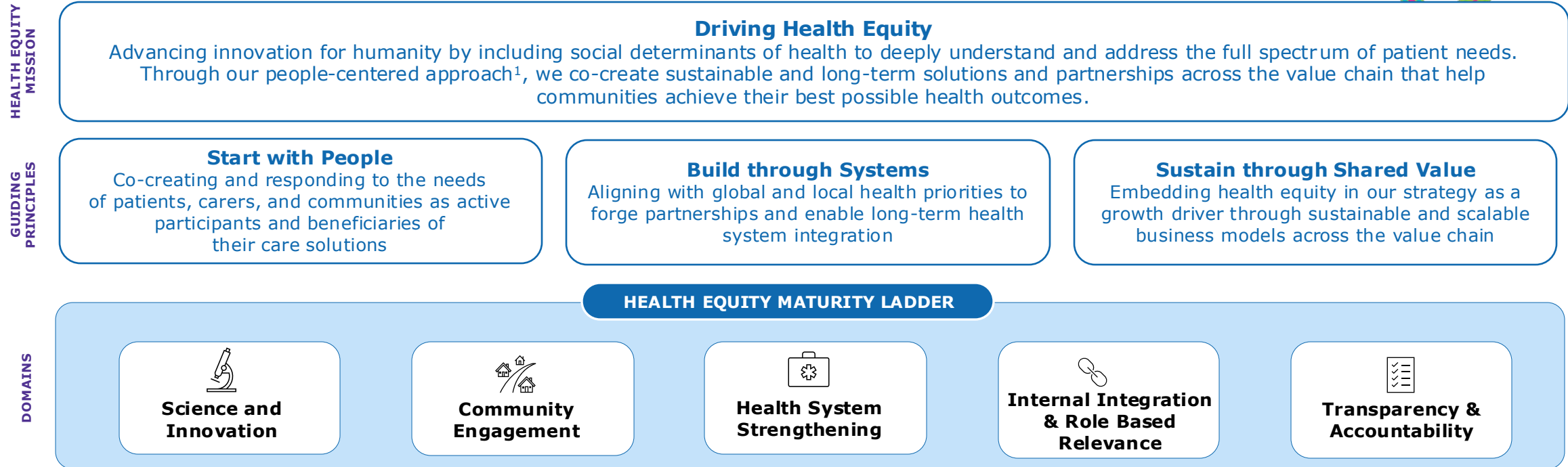
Health equity is **implicit in a lot of what we already do** – we aim to make the overarching **narrative clear and aligned** across initiatives



*Addressing Social Determinants of Health: Examples of Successful Evidence-Based Strategies and Current Federal Efforts. (Whitman et al, 2022)

Ideal State Framework

Our health equity framework is aligned with our company vision: “Sparking Discovery, Elevating Humanity”



1. Our patient journey approach recognizes the person as a whole with many levels of needs and goals, with needs coming from their personal social determinants of health and lived experience. This approach enhances our ability to deliver on our mission to create, improve, and prolong life.

Chrysanthus Herrera

Head of Health Equity and
Access Realization

Access

